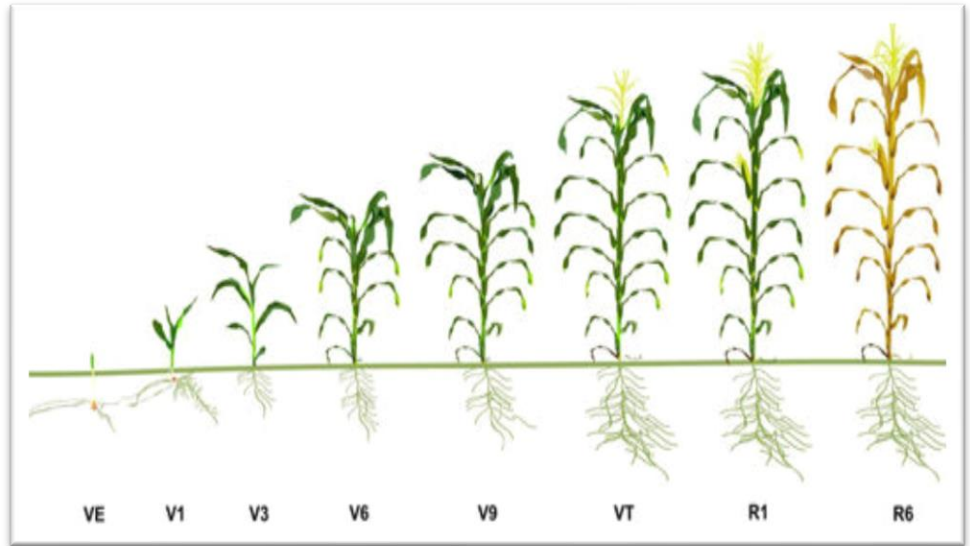


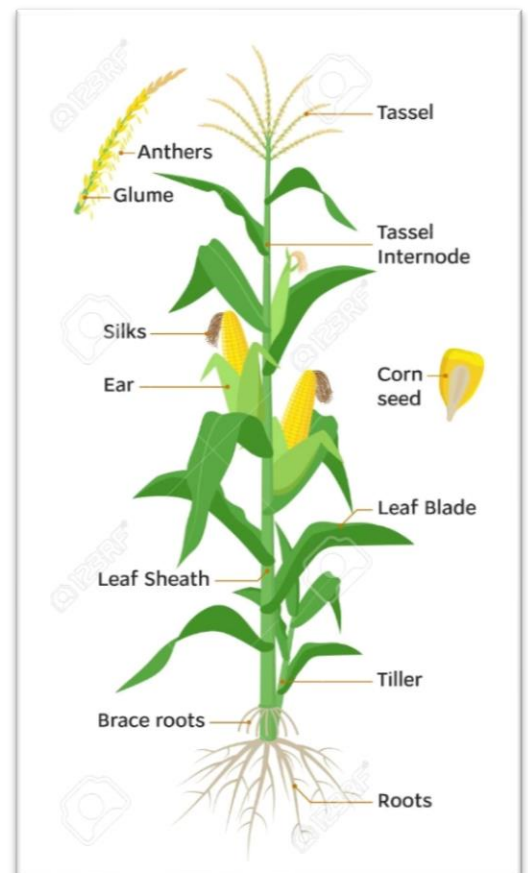
Calculating In-Field Bushels Per THOUSAND



Lets begin by assuming that you have a corn field planted in 30 in rows. The first thing I'm going to do is to take a stand count to see how many living plants you have in the field. So, I measure off 17 feet 4 inches, which is 1,000th of an acre in 30-inch rows and then I simply count the number of plants in that 17 ft 4 in. I can do this in as many places in the field as I want in order to get an average.

Let's imagine that in the 17 feet 4 inches I Counted 33 plants. That means this living farmers population is approximately 33,000 plants per acre.

The number of plants per ace that will give us full ears is equivalent to 28,750. Multiply that number by 8 bushels per 1,000 plants, which is the ideal for corn and you get 230 bushels per acre. That is the maximum yield that this field can produce out of the potential of 264 bushels per ace if all 33,000 plants produced a full ear (8 bushels per 1,000 plants). To find the current bushels per 1,000 plants, simply divided 230 bushels by 33,000 and you get 6.9 bushels per 1,000 plants. The grower is leaving about 34 bushels of corn in the field..



BEEF COW Management Monthly Checklist – May



***Rancher here are a few tips for
the Month of May***

- 1. Nutrition:** Have brome or crested wheatgrass pastures available for grazing in the spring and reserve native pastures for summer grazing. Include magnesium oxide in the mineral mix if grass tetany could be a problem. Cows on pasture should have access to phosphorus and salt.
- 2. Health:** Dehorn and castrate calves before fly season. Vaccinate calves for blackleg and malignant edema. Clean calving pens, corral and calving equipment.
- 3. Management:** Make preparations for hay season
- 4. Reproduction:** Strive for a 45 to 60 day breeding season for the main cows heard. 5% to 6% of the heard should be coming into heat per day. **If this not occurring, reevaluate the nutrition and health program**
- 5. Marketing:** Buy yearling calves for grass. Typically, feeder steers price are higher in August than in September. In addition grass cattle frequently gain very little in September, therefore, August marketing may be more profitable.
- 6. Business Planning:** Evaluate the profit potential (1) contracting your selling price of steers of grass (2) using options to place a floor on fall grass steer price and (3) pricing your steers on the cash market as you sell them off grass and assuming all of the price risk..